



Satin Brass (Finish ID:13)

## LUDLOW D HANDLE

	Item Code	Size (mm & Inches)	Material	Size (Inches)				Fig.
				A	B	C	D	
1	DH.1027.96.XX	96mm (3.78")	Brass	4.53	0.75	3.78	1.44	1
2	DH.1027.128.XX	128mm (5.04")	Brass	5.79	0.75	5.04	1.44	1
3	DH.1027.160.XX	160mm (6.3")	Brass	7.05	0.75	6.3	1.44	1
4	DH.1027.192.XX	192mm (7.56")	Brass	8.31	0.75	7.56	1.44	1

"XX" in item code denotes Finish ID.

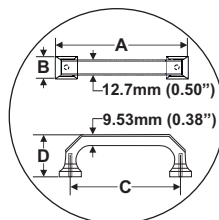


FIG. 1

This product is Supplied with M4x25mm screws.  
This product is Supplied with M4x45mm break off screws.

## How to Order

**DH.1027.96.13**

D HANDLE      STYLE : LUDLOW      SIZE : CC 96 MM      FINISH ID : 13

### Ludlow D Handle Finish Options

Base Material : Brass		Standard Finishes (2-3 Weeks Delivery)			
					
Bright Chrome (Finish ID:2)	Brush Nickel (Finish ID:3)	Aged Brass (Finish ID:4)	Unlacquered Polished Brass (Finish ID:7U)	Polished Nickel (Finish ID:8)	Satin Brass (Finish ID:13)
Base Material : Brass		Custom Finishes (3-4 Weeks Delivery)*			
					
Lacquered Polished Brass (Finish ID:7L)	Matte Black (Finish ID:19)				

- Custom finishes cannot be returned or refunded. We are unable to accept cancellations for custom finish order unless within 48 hours of the order being placed.
- We have uniform pricing for all non-hammered finishes listed above as long as base material and size is same.
- Contact us for customized finishes, refer pages F1, F2, F3 & F4 for finish glossary.
- Backplate options refer page DBP1-1 to DBP2-1.