



Titanium (Finish ID : 79)

BOSS APPLIANCE PULL

	Item Code	Size (mm & Inches)	Material	Size (Inches)				Fig.
				A	B	C	D	
1	APL.849.12".XX	304.8mm (12")	Brass	13.27	0.63	12	1.88	1
2	APL.849.18".XX	457.2mm (18")	Brass	19.25	0.63	18	1.88	1
3	APL.849.24".XX	609.6mm (24")	Brass	25.28	0.63	24	1.88	1
4	APL.849.36".XX	914.4mm (36")	Brass	37.24	0.63	36	1.88	1
5	APL.849.48".XX	1219.2mm (48")	Brass	49.25	0.63	48	1.88	1

"XX" in item code denotes Finish ID.

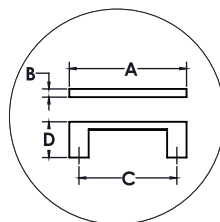


FIG. 1

This product is Supplied with M6x40mm screws.
This product is Supplied with M6x60mm break off screws.

How to Order

APL.849.12".79
 APPLIANCE PULL STYLE : BOSS SIZE: CC 12 INCH FINISH ID : 79

Boss Appliance Pull Finish Options

Base Material : Brass		Standard Finishes (2-3 Weeks Delivery)				
						
Bright Chrome (Finish ID:2)	Brush Nickel (Finish ID:3)	Unlacquered Polished Brass (Finish ID:7U)	Polished Nickel (Finish ID:8)	Satin Brass (Finish ID:13)		
Base Material : Brass		Custom Finishes (3-4 Weeks Delivery)*				
						
Lacquered Polished Brass (Finish ID:7L)	Matte Black (Finish ID:19)	Satin Chrome (Finish ID:24)	Graphite (Finish ID:61)	Titanium (Finish ID:79)	Ombre (Finish ID:92)	Brush Chrome (Finish ID:95)

- Custom finishes cannot be returned or refunded. We are unable to accept cancellations for custom finish order unless within 48 hours of the order being placed.
- We have uniform pricing for all non-hammered finishes listed above as long as base material and size is same.
- Contact us for customized finishes, refer pages F1, F2, F3 & F4 for finish glossary.
- Backplate options refer page ABP1-1.